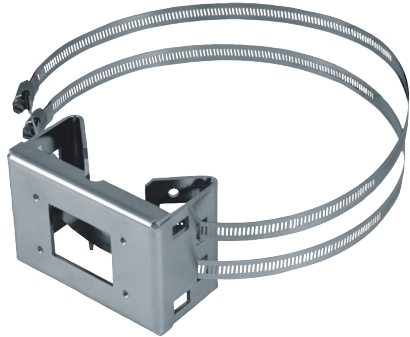


# MMXCWCOL

## POLE AND CORNER ADAPTOR MODULE



### DESCRIPTION

Pole and corner adaptor module in stainless steel AISI 316L.

### TECHNICAL DATA

#### MECHANICAL

Made of AISI 316L electropolished stainless steel

For pole diameters: from 60mm (2.36in) up to 200mm (7.9in)

Load rating: 30kg (66lb)

Dimensions: 120x86mm (4.7x3.4in)

Unit weight: 0.7kg (1,5lb)

### PART NUMBER

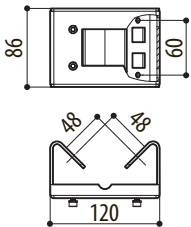
MMXCWCOL Pole and corner adaptor module in stainless steel AISI 316L

### PACKAGE

Model Number	Weight	Dimensions (WxHxL)	Master carton
MMXCWCOL	0.8kg (1.8lb)	9.5x13x19.5cm (3.7x5x7.7in)	-

### TECHNICAL DRAWINGS

The indicated measurements are expressed in millimetres.



MMXCWCOL