

WBJA

WALL MOUNT BRACKET



DESCRIPTION

Wall bracket with sturdy joint. It is suitable for medium and large extruded aluminium housings.

TECHNICAL DATA

MECHANICAL

Made of aluminium

Adjustable joint

Load rating: 25kg (55lb)

Length: 285mm (11.2in)

Unit weight: 0.6kg (1.3lb)

PART NUMBER

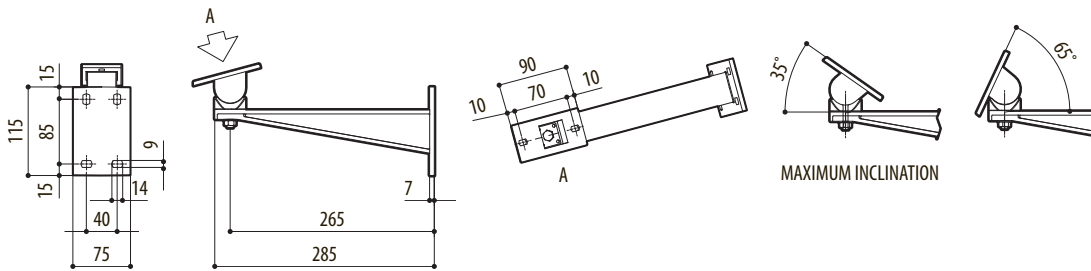
WBJA Wall mount bracket

PACKAGE

Model Number	Weight	Dimensions (WxHxL)	Master carton
WBJA	0.7kg (1,5lb)	8.1x12x31cm (3.2x4.7x12.2in)	20

TECHNICAL DRAWINGS

The indicated measurements are expressed in millimetres.



WBJA