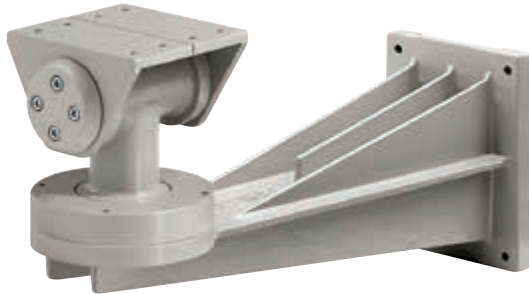


WBLA

WALL BRACKET WITH JOINT IN SOLID ANTICORODAL ALUMINUM ALLOY



DESCRIPTION

Wall bracket with joint in solid anticorodal aluminum alloy.

TECHNICAL DATA

MECHANICAL

Solid, anticorodal aluminium construction
Load rating: 70kg (154lb)
Length: 457.5mm (18,7in)
Unit weight: 6.6kg (14.5lb)

PART NUMBER

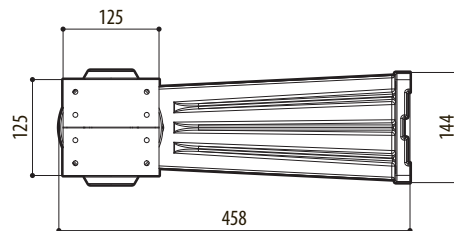
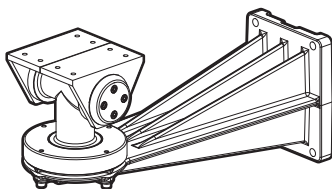
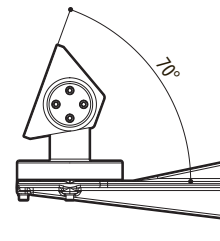
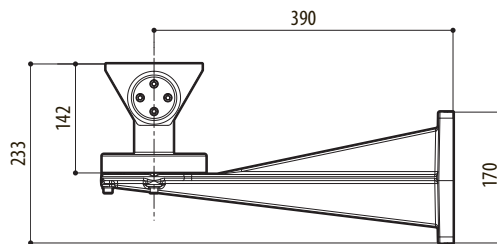
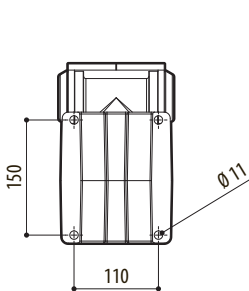
WBLA Bracket and ball joint in solid anticorodal aluminium construction, RAL9002

PACKAGE

| Model Number | Weight | Dimensions (WxHxL) | Master carton |
|--------------|--------------|--------------------------|---------------|
| WBLA | 7kg (15.4lb) | 27x18x49cm (10.5x7x19in) | - |

TECHNICAL DRAWINGS

The indicated measurements are expressed in millimetres.



WBLA