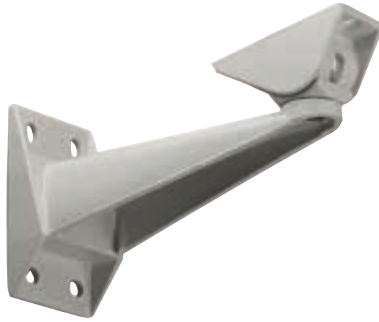


WBMA

WALL MOUNT BRACKET



DESCRIPTION

Medium-duty die-cast aluminium wall bracket with integrated joint. It is particularly suitable for medium-small size housings.

TECHNICAL DATA

MECHANICAL

Made of aluminium

Adjustable joint

Load rating: 25kg (55lb)

Length: 204mm (8in)

Unit weight: 0.5kg (1.1lb)

PART NUMBER

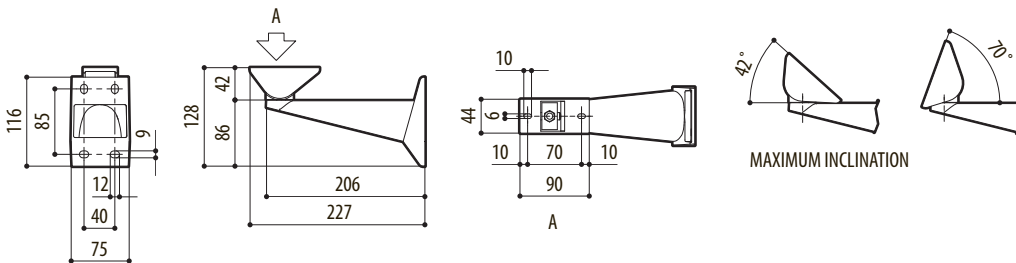
WBMA Wall bracket with joint

PACKAGE

Model Number	Weight	Dimensions (WxHxL)	Master carton
WBMA	0.6kg (1.3lb)	7.5x12x23cm (3x4.7x9in)	25

TECHNICAL DRAWINGS

The indicated measurements are expressed in millimetres.



WBMA